

Surgical versus conservative treatment for high-risk stress fractures of the lower leg (anterior tibial cortex, navicular and fifth metatarsal base): a systematic review

Wouter H Mallee,¹ Hanneke Weel,¹ C Niek van Dijk,¹ Maurits W van Tulder,² Gino M Kerkhoffs,¹ Chung-Wei Christine Lin³

► Additional material is published online only. To view please visit the journal online (<http://dx.doi.org/10.1136/bjsports-2013-093246>).

¹Department of Orthopaedic Surgery, Academic Medical Center of Amsterdam, Amsterdam, The Netherlands
²Department Health Sciences, EMGO+ Institute for Health and Care Research, Faculty of Earth and Life Sciences, VU University Amsterdam, Amsterdam, The Netherlands
³The George Institute for Global Health, Sydney Medical School, The University of Sydney, Sydney, Australia

Correspondence to

Dr Wouter H Mallee, Academic Medical Center of Amsterdam, Department of Orthopaedic Surgery, Secretariaat G4-Noord, Meibergdreef 9, Amsterdam Z-O 1105 AZ, The Netherlands; w.h.mallee@amc.uva.nl

Accepted 22 July 2014
Published Online First 19 August 2014

ABSTRACT

Aim To compare surgical and conservative treatment for high-risk stress fractures of the anterior tibial cortex, navicular and proximal fifth metatarsal.

Methods Systematic searches of CENTRAL, MEDLINE, EMBASE, CINAHL, SPORTDiscus and PEDro were performed to identify relevant prospective and retrospective studies. Two reviewers independently extracted data and assessed methodological quality. Main outcomes were return to sport and complication rate.

Results 18 studies were included (2 anterior tibia (N=31), 8 navicular (N=200) and 8 fifth metatarsal (N=246)). For anterior tibial fracture, no studies on initial surgery were eligible. Conservative treatment resulted in high complication rates and few cases returned to sport. For navicular fracture, a weighted mean return to sport of 22 for conservative and 16 weeks for surgical treatment was found. Six weeks of non-weightbearing cast was mostly used as conservative treatment. Surgical procedures varied widely. For the fifth metatarsal fracture, weighted mean return to sport was 19 for conservative and 14 weeks for surgical treatment. Surgery consisted of intramedullary screw fixation or tension band wiring. For conservative methods, insufficient details were reported. Overall, there was a high risk of bias; sample sizes were small and GRADE level of evidence was low.

Conclusions Strong conclusions for surgical or conservative therapy for these high-risk stress fractures cannot be drawn; quality of evidence is low and subjected to a high risk of bias. However, there are unsatisfying outcomes of conservative therapy in the anterior tibia. The role of initial surgery is unknown. For the navicular, surgery provided an earlier return to sport; and when treated conservatively, weightbearing should be avoided. For the fifth metatarsal, surgery provided the best results. Treatment decision-making would greatly benefit from further prospective research.

Study registration number PROSPERO database of systematic reviews: CRD42013004201.

INTRODUCTION

The time to return to sport or full activity is an important issue in the treatment of stress fractures as they mainly occur in (high-level) athletes or military personnel.^{1 2} These injuries usually appear in the lower leg due to repetitive loading and high-impact forces applied during training and matches.³

Notorious locations in this type of injury are the anterior tibial cortex, navicular bone and proximal fifth metatarsal.⁴ Owing to hypovascularity or a watershed area,^{5–9} these stress fractures are prone to delayed union or non-union. Complication rates are high and patients are often absent from duty or sport for a long time, sometimes resulting in the end of a career. Therefore, these fractures are known as ‘high-risk’ injuries.^{10–12} Clinical decision-making and adequate treatment of this demanding group of patients is crucial to facilitate a return to their normal level of activity.

Anterior tibial cortex

Of all tibial stress fractures, the anterior cortex is injured in only 5–15%,^{13 14} but of the three high-risk stress fractures, these might create the biggest threat for an athletic or military career. They differ from the more common and easier to treat postero-medial tibial stress fractures, as the anterior part is the tension side of the tibia. Compression of the fracture site is therefore hindered. From start of treatment until complete healing can take up to 20 months.^{15 16} Owing to its location and low prevalence, symptoms are usually not recognised as stress fracture. This can result in a big delay in definitive diagnosis and initiation of treatment.

Navicular

Navicular stress fractures are one of the more common stress fractures,¹⁷ especially in runners and basketball players.¹⁸ These stress fractures can present as partial or complete fractures. In type I, a fracture of the dorsal navicular cortex is present, type II fractures disseminate into the navicular body and type III fractures extend to a second cortex of the navicular. Severity of the fracture is believed to correlate with the outcome.¹⁹

Proximal fifth metatarsal

The proximal fifth metatarsal stress fracture is mainly seen in soccer, football and basketball players.^{4 20 21} Several theories about risk factors like cavovarus foot^{22 23} and curved type fifth metatarsal bone in the medial oblique radiograph²³ have been reported. Different prognostic factors like Torg classification,²⁴ zones according to Lawrence²⁵ and the plantar gap²⁶ might predict outcome and guide treatment. A plantar gap of more than 1 mm or Torg 2 or 3 fractures are likely to have the most prolonged healing time.²⁶



CrossMark

To cite: Mallee WH, Weel H, van Dijk CN, et al. *Br J Sports Med* 2015;49:370–376.

Whereas the impact of these three lower leg stress fractures can be severe in this active population, identifying the best treatment options that allow an early return to sport or activity is much needed. However, it remains unclear which option is most effective.^{27 28} The purpose of this systematic review is to compare surgical and conservative treatment for high-risk stress fractures of the lower leg on return to activity, work and sport.

METHODS

The protocol for this study was registered in the PROSPERO database (CRD42013004201). The review is reported according to the 2009 PRISMA Checklist.²⁹

Search strategy

The following electronic databases were systematically searched: Central via Cochrane Library, MEDLINE via PubMed, EMBASE, CINAHL and SPORTDiscus via EBSCO-host from inception to 26 March 2013 (see online supplementary appendix 1) and PEDro from inception to 9 April 2013. The general search terms were 'tibia', 'navicular' and 'metatarsal' to identify the right location. For the right condition, we used 'stress fracture' and 'fatigue fracture'. 'Conservative treatment' and 'surgery' were added to look for treatment studies and their outcome with 'treatment outcome', 'return to sports' and 'fracture healing'. The reference lists of relevant reviews and included studies were screened for additional articles.

Selection criteria

Because of the expected low number of randomised controlled trials (RCTs), other study designs such as non-randomised trials and prospective cohorts with or without a comparison were included as well. Case series were included only if the sample was consecutively collected and number of patients was at least 10. No time or language restriction was applied. Male and female samples of all age groups, athletes or non-athletes, with stress fractures to the anterior tibial cortex, navicular bone or proximal fifth metatarsal undergoing surgical or conservative treatments (including rest) were included. The primary outcome was time to return to activity, work and sport. Secondary outcomes were time to healing (clinical and radiological), complication rate (eg, refractures, non-unions, postoperative infections) and economic data.

Data extraction

Study selection and data extraction were performed by two review authors (WHM and HW), independently. Disagreements were discussed in a consensus meeting and a third reviewer (C-WCL) made a final decision if disagreements persisted.

Titles and abstracts were screened for eligibility. After initial selection, full article review was performed and a reason for exclusion provided at this stage. The following data were extracted from included studies: study design, sample source and size, participant characteristics, time from onset of symptoms to diagnosis and start of treatment, type of treatment, timing of follow-up assessments and data on the primary and secondary outcomes. Data were extracted for all follow-ups available in each included study. The full text screening form and the data extraction form were specially created for the review and were piloted before use.

Strategy for data synthesis

Data were presented per fracture location (anterior tibial cortex/navicular/proximal fifth metatarsal), by type of treatment (surgical or conservative) and, if available, by the type of comparator.

Time units of the outcomes were converted (if needed) and presented in weeks, other time units were converted and presented in months. If enough studies were present that were clinically and statistically homogeneous and data on them adequately reported, a meta-analysis was performed using a fixed-effects model. In case of statistical heterogeneity, a random-effects model was used. If meta-analysis was not possible, results were reported in a descriptive manner. The need to explore for statistical heterogeneity was determined by a combination of visual inspection of the results (eyeball test) and an I^2 greater than 40%.

For all continuous outcomes, a standardised mean difference was calculated when studies used different methods to measure the same outcome, or weighted mean difference and SDs if the same methods were used. Between-group differences were reported with 95% CIs. For dichotomous data, risk ratios and 95% CIs were calculated. Categorical data were presented in a descriptive manner.

Risk of bias assessment

Two review authors performed the risk of bias (RoB) assessment (WHM and HW) using the Cochrane collaboration Risk of Bias tool. Disagreements were discussed in a consensus meeting and a third reviewer (C-WCL) made a final decision if disagreements persisted. The following items were assessed: random sequence generation, allocation concealment, blinding of outcome assessment, incomplete outcome data, selective outcome reporting and other sources of bias. The items were scored: low risk, high risk or unclear risk according to the descriptions in the latest version of the Cochrane handbook.³⁰

The overall quality of the evidence and strength of recommendations was evaluated using the GRADE approach.^{31 32} The quality of the evidence for a specific outcome is based on five principal domains: (1) limitations (due to, eg, RoB), (2) consistency of results, (3) directness (ie, generalisability), (4) precision (sufficient data with narrow CIs) and (5) other limitations (eg, publication bias). To improve the readability of this review, GRADE tables were to be generated only when two or more studies were to be analysed for a given comparison. Single studies are considered to provide 'low' or 'very low-quality evidence', depending on whether they are associated with a low or high RoB, respectively. In addition, GRADE tables were generated for the primary outcome measures only. The following levels of the quality of the evidence were applied:

High quality: Further research is very unlikely to change the level of evidence. There are sufficient data with narrow CIs. There are no known or suspected reporting biases.

Moderate quality: Further research is likely to have an important impact on confidence in the estimate of effect and may change the estimate; one of the domains is not met.

Low quality: Further research is very likely to have an important impact on confidence in the estimate of effect and is likely to change it; two of the domains are not met.

Very low quality: Great uncertainty about the estimate; three of the domains are not met.

RESULTS

The systematic search yielded a total of 927 hits resulting in 540 unique references for screening (figure 1). During full article review of the 93 articles that met the inclusion criteria following title and abstract screening, most articles were excluded because the number of cases was lower than 10, or the fracture was not caused by repetitive stress. Eighteen small studies, 16 retrospective case series and 2 prospective cohorts, were appropriate for

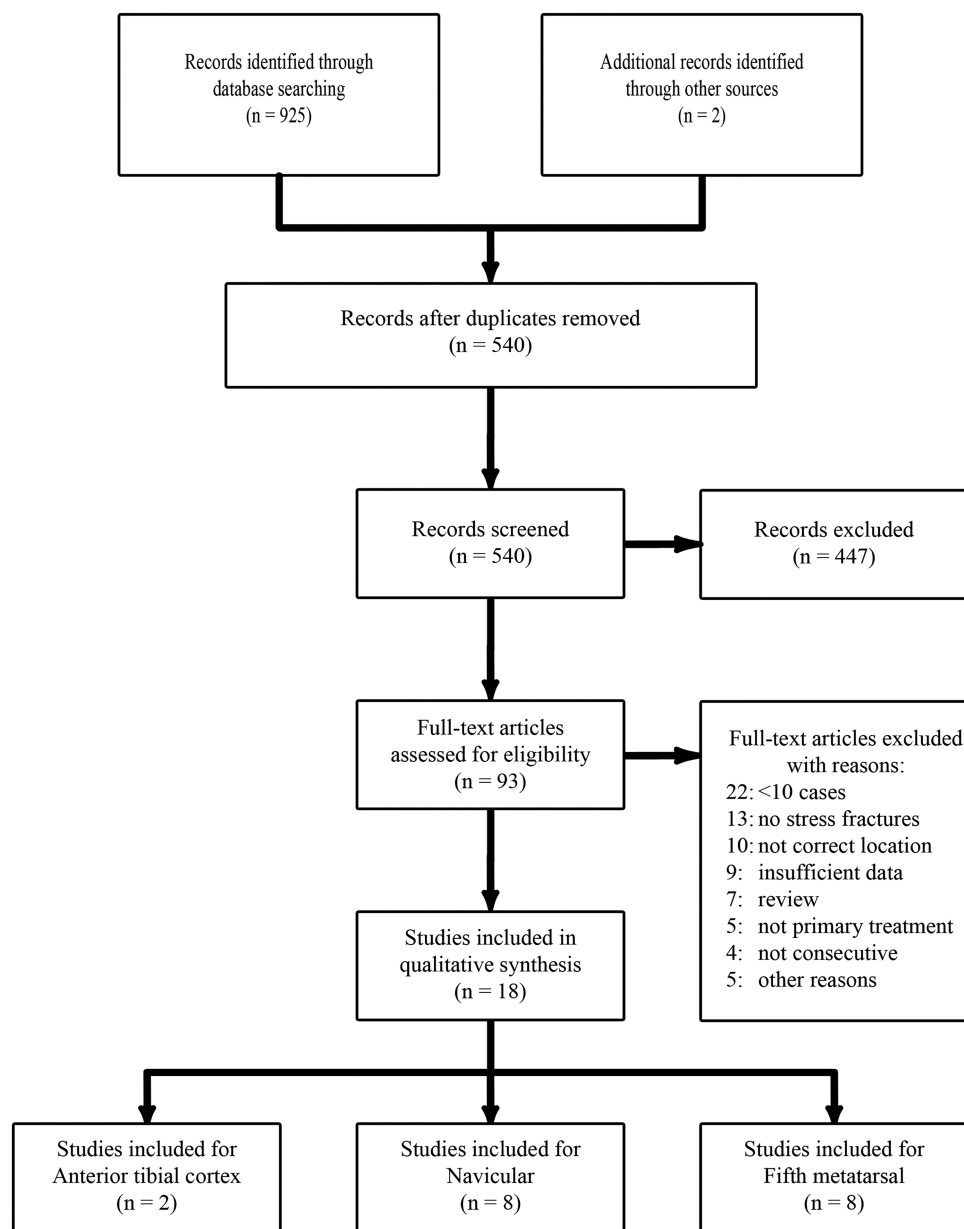


Figure 1 PRISMA flow diagram.

inclusion in this review: 2 for the anterior tibial cortex, 8 for the tarsal navicular and 8 for the fifth metatarsal. The characteristics per study are presented in online supplementary table S1.

Risk of bias assessment

All studies had a high risk of selection bias since there were no RCTs identified (table 1). In addition, risk of detection bias was high when there was no blinding of the outcome assessor^{6 19 33–36} or unclear when blinding was not reported.^{15 20 21 37–41} Some studies were clear and complete in their data reporting, resulting in a low risk to attrition and reporting bias. Risk of other biases was high, because most studies used a retrospective design.

Anterior tibial cortex

No studies comparing surgical and conservative treatment were found (table 2). Two small retrospective case series (n=14 and 17) were included, resulting in very low-quality evidence.^{15 39} Patients were all recreational or elite level athletes, aged

between 11–44 years old. After a delay from onset of symptoms until treatment of up to 36 months, all patients were initially treated with rest from sports and/or immobilisation (method unspecified). Johansson *et al*¹⁵ reported a return to sport rate of 55%. Orava *et al*³⁹ found a time to return to sport of 24 weeks (range 12–40) for the healed fractures but the non-unions returned to sport 28.4 weeks (16–64) after subsequent surgery. In total, 13/14 (93%)¹⁵ and 9/17 (53%)³⁹ anterior tibial stress fractures did not unite after initial conservative treatment. Of these patients, 13 needed secondary surgery consisting of transverse drilling and excision of the granulated tissue and in some cases autologous bone graft was added. No studies were identified that reported on initial surgical treatment.

Navicular

No RCTs were identified (table 2). A total of eight studies, seven retrospective series and one prospective study, were found, describing 200 fractures. Only three patients were non-

Table 1 Cochrane Risk of Bias assessment—web appendix

Study	Selection bias		Detection bias Blinding of outcome assessors	Attrition bias Incomplete outcome data	Reporting bias Selective outcome reporting	Other bias
	Random sequence generation	Allocation concealment				
Anterior tibia						
Johansson <i>et al</i>	–	–	?	+	?	–
Orava <i>et al</i>	–	–	?	–	?	–
Navicular						
Benazzo <i>et al</i>	–	–	–	–	–	–
Bojanic <i>et al</i>	–	–	–	+	+	+
Burne <i>et al</i>	–	–	?	+	?	–
Khan <i>et al</i>	–	–	?	–	?	–
McCormick <i>et al</i>	–	–	–	+	–	–
Saxena <i>et al</i> ¹⁹	–	–	–	–	–	–
Saxena and Fullem ³⁶	–	–	–	–	–	–
Torg <i>et al</i>	–	–	–	+	–	–
Fifth metatarsal						
Chuckpaiwong <i>et al</i>	–	–	?	–	–	–
DeLee <i>et al</i>	–	–	?	+	?	–
Ekstrand <i>et al</i>	–	–	?	+	+	+
Josefsson <i>et al</i>	–	–	?	+	–	–
Lee <i>et al</i>	–	–	?	?	?	–
Nagao <i>et al</i>	–	–	?	+	?	–
Pecina <i>et al</i>	–	–	–	+	–	–
Popovic <i>et al</i>	–	–	–	+	–	–

athletes, the rest were athletes of recreational or elite level. Their median age was in the mid-20s. The mean time from onset of pain until treatment was 2 months and ranged from immediate treatment to 5 years' delay. The received conservative and surgical treatments varied widely among studies and the data reported on return to sport and time until healing were skewed, so it was not possible to perform a meta-analysis.

Four retrospective case series included surgically and conservatively treated patients.^{6 19 36 38} Two studies reported an earlier return to sport after surgical treatment compared with conservative treatment.^{19 36} In one study, this difference was statistically significant (average: 12.4 vs 17.2 weeks), but with great dispersion (range: 6–52 weeks).¹⁹ A second study by the same authors showed no significant differences between the two treatments (14.8 vs 16.4 weeks).³⁶ The weighted mean time to return to sport was 16.4 weeks in the surgically treated patients^{6 19 36 38} and 21.7 weeks in patients treated conservatively with non-weightbearing cast (NWBC) >6 weeks.^{6 19 34 36 38} Khan reported no difference in successfully return to sport within 12 months between conservative and surgically treated patients (86% vs 83%, respectively). The success rates of NWBC <6 weeks and weightbearing (WB) treatment were lower than 50%.³⁸ More severely classified fractures that extend to the opposite cortex (table 3) may prolong the time to return to sport,^{19 36} but a diagnostic delay did not.¹⁹

Two retrospective case series reported on the effects of conservative treatment only. Benazzo *et al*³³ evaluated the application of electrostimulation (n=13) and reported an average time to clinical healing of 8.6 weeks (range 4–10.7). Burne *et al* reported an average time to clinical healing of 4 years (range 1.1–15.3). None of the other included studies provided data on time to healing.

Adverse events were generally poorly reported (low-quality reporting). They were reported in five studies. Of the 35 surgically treated patients, complications included two hardware

removals, one non-union and one superficial infection treated with oral antibiotics. In the 165 conservatively treated patients, 39 treatment failures consisted of 32 in the WB group,³⁸ as well as two non-unions and three delayed unions in the WB group. This WB group also had 13 refractures.^{6 19 34 37} There was an 80% treatment success among the patients treated with NWBC and a 29% success among the patients treated with some form of WB rest or immobilisation.³⁸

Proximal fifth metatarsal

A total of 246 cases from eight studies were eligible for inclusion (table 2). The athletic level of the participants was mainly elite and their age ranged between 13 and 45 years. One study looked at conservative treatment,⁴¹ five studied surgical treatment^{20 26 42–44} and two studied both.^{21 40} Different types of conservative and surgical treatments were administered. No RCTs were identified, one study used a prospective design²¹ and all other studies were retrospective case series.

Of the two studies that included surgically and conservatively treated patients, Chuckpaiwong *et al* reported a significant quicker return to sport for surgical treatment (mean 15.2, SD 10.5 weeks) compared with conservative treatment (mean 26.3, SD 11.0 weeks). In addition, one out of the eight conservatively treated patients required secondary surgery due to non-union of the fracture. The other study, a prospective cohort by Ekstrand *et al*, reported an earlier return to sport for the conservative group of 9.9 vs 12 weeks for the surgical group, but the range was wide and this difference was not statistically significant. Of the 6 patients treated conservatively, three refractures and one non-union occurred while 5 of the 14 patients treated surgically had a refracture and no non-unions occurred. When all eight studies were pooled together, the weighted mean time to return to sport was 13.8 (SD 2.8) weeks in the surgically treated patients and 19.2 (SD 6.3) weeks in the conservatively treated patients.

Table 2 Study outcomes

Reference	Treatment	Onset until treatment Month (range)	Primary outcomes			Secondary outcomes		Complications		
			RT sport Weeks (range)	RT sctivity Weeks (range)	RT work Weeks (SD)	Clinical healing Weeks (range)	Radiological healing Weeks (range)	Non-unions (delayed)	Refractures	Postoperative
Anterior tibial cortex										
Johansson <i>et al</i>	C	14.8 (1–36)	n=6	xx	xx	xx	xx	13	xx	xx
Orava <i>et al</i>	C	7 (3–24)	24 (12–40)	xx	xx	xx	is RT sports	9	1	xx
Navicular										
Benazzo <i>et al</i>	C	7.5	All	xx	xx	8.6 (4–10.7)	is Clinical healing	0	0	xx
Bojanic <i>et al</i>	C	3.3	24 (17–32)	(14–20)	xx	xx	xx	0	1	xx
Burne <i>et al</i>	C	4.8 (1–15)	n=6	xx	xx	208 (57–796)	3/11 at 4 years	xx	4	xx
Khan <i>et al</i>	C and S	4 (3 days–5 years)		xx	xx	xx	xx		xx	xx
	S		15.2					1		
	C		21					39		
McCormick <i>et al</i>	S	4.3	xx	xx	xx	xx	xx	2	xx	1 SI
Saxena <i>et al</i> ¹⁹	C and S	5.0 (1 day–4 years)		xx	xx	xx	xx	xx		
	S		12.4 (6–20)*							1 HWR
	C		17.2 (12–52)						5	
Saxena and Fullem ³⁶	C and S		†	xx	xx	xx	xx		xx	0
	S	25.5 (3–240)‡	16.4±4.8					0	0	1 HWR
	C	2.25 (0.5–6)	14.8±6.4					0	0	
Torg <i>et al</i>	C and S	7.2 (0–38)		xx	xx	xx	xx			
	S		28 (26–30)	xx	xx	xx	xx	0	0	0
	C		21 (11–48)	xx	xx	xx	xx	1 (1)	3	xx
Fifth metatarsal										
Chuckpaiwong <i>et al</i>	C and S	xx		xx		xx		2	0	3 HWR
	S		15.2±10.5		3.2 (2.2)		39.2 (87.6)	0		
	C		26.3±11.0		2.5 (0.8)		19.2 (21.6)	1		
DeLee <i>et al</i>	S	(3.0–18.0)	8.5 (7–14)	xx	xx	4.5 (3–6)	7.5 (6–8)	0	0	0
Ekstrand <i>et al</i>	C and S	xx		xx	is RT sport	is RT sport	xx			xx
	S		12 (6.1–17.6)					0	5	
	C		9.9 (8.4–11.1)					1	3	
Josefsson <i>et al</i>	C	0.07 (0–0.7)	All	xx	xx	All at final FU	13 at final FU	0	2	xx
Lee <i>et al</i>	S	xx	14.1 (5.7–30.3)§	xx	xx	xx	is RT sport	9¶	6**	xx
Nagao <i>et al</i>	S	xx	11.2 (6–25)	6.3 (3–12.7)	xx	xx	8.8 (4–20.1)	2 (1)	0	0
Pecina <i>et al</i>	S	xx	9 (5–14)	xx	xx	All at final FU	xx	xx	1	0
Popovic <i>et al</i>	S			xx	xx			xx		xx
	S	0.7 (0.5–0.8)	12.2 (11–17)			6 (5–8)	11.3 (9–11.8)		3	
	S	1 (0.8–1.3)	12 (12–12)			7.1 (6–9.2)	10.1 (8.6–10.5)		0	

*Include 5 previously conservative treated patients.

†(T1: 15.2±6.8, T2: 14.8±3.2, T3: 16.8±0.3).

‡Without 240: 7.7 (3–24).

§T1: 10.1(3.1), T2: 14.9 (7.8), T3: 17.6 (7.4) gap <1 mm 10.1 (4.3), >1 mm 18.1 (7.4).

¶(8T2, 1T3/8 had >1 mm plantair gap).

** (4T1, 2T2//>1 mm 3, <1 mm 3).

C, conservative; FU, follow-up; HWR, hardware removal; RT, return to; S, surgery; SI, superficial infection.

Table 3 Fracture classifications

Classification	Navicular (Saxena <i>et al</i> ¹⁹)	Fifth metatarsal (Torg)
T1	Dorsal cortical fracture	No intramedullary sclerosis, a fracture line with sharp margins, no widening or radiolucency, minimum cortical hypertrophy or evidence of periosteal reaction
T2	Dorsal fracture into navicular body	Fracture line involving both cortices, associated periosteal new bone; a widened fracture line with adjacent radiolucency and evidence of intramedullary sclerosis
T3	Fracture extends to second cortex	Wide fracture line with periosteal new bone and radiolucency, complete obliteration of the medullary canal at the fracture site by sclerotic bone

Radiological fracture healing was mainly evaluated by using radiographs. Mean time of healing in the surgical group ranged from 7.5²⁰ to 39.2 weeks.⁴⁰ In the conservative group, this was 19.2 weeks based on one small study.⁴⁰ Surgically treated patients had a non-union rate of 4.6% and a refracture rate of 6.9%. No infections or wound complications were reported. Conservatively treated patients had a non-union rate of 7.1% and a refracture rate of 17.9%.

No economic data were found for any of the fracture locations. Overall, the evidence was scored as ‘very low quality’.

DISCUSSION

The main goal of the present study was to compare the time to return to sport, activity and work after conservative or operative treatment of stress fractures of the anterior tibial cortex, the navicular bone and the fifth metatarsal. We found very low-quality evidence only and it remains unclear whether surgery is more effective than conservative treatment for high-risk stress fractures of the lower leg. The key issues depicted by this review are the small number of studies, the small sample sizes and the high RoB of the studies. Also, there were only two cohorts of which only one included both surgery and conservative treatment. According to the GRADE approach, the level of evidence is of very low quality, suggesting that there is great uncertainty about the effect estimate. It would be inappropriate to draw firm conclusions about a possible superior therapy.

The methodology applied to the search and selection of articles for inclusion is one of the strengths of this review. All major databases were systematically searched without restrictions in language. To minimise outcome bias, we only included studies with a consecutive series of 10 or more patients. For the first time in stress fracture reviews, adequate quality assessment of included studies was performed to reveal the methodological weakness of current literature on which we base our treatment policies.

Several reviews already reported advice on best treatment,^{27 28 45} even though little and poor evidence on conservative and surgical methods was available. Importantly, we found no RCTs and no direct comparison between surgical or conservative treatment; hence, the quality of evidence was very low. Furthermore, as stated in a comment on the navicular stress fracture review by Torg *et al*,⁴⁶ there is a lack of focus on different fracture types (table 3). This statement might be applicable to all three high demand stress fractures, since it is likely that outcomes differ with severity of the fracture.

No studies collected economic data; therefore, the cost or cost-effectiveness of either conservative or surgical treatment is unknown.

Anterior tibial cortex

The lack of evidence for initial surgery refrain us from comparing surgery and conservative treatment. The few results for conservative treatment provide worrying outcomes since most patients did not return to their previous level of sport and a high rate of non-unions was found. Clinicians must keep these results in mind and explain the difficulties in anterior tibial stress fractures to their patients. Extensive follow-up of conservatively treated is advised to assess proper healing and to intervene if non-union occurs.

Small case series not included in this review, which studied (secondary) tension band plating, report interesting time to return to sport of approximately 3 months. This was achieved without major complications in union or infection.^{47 48} However, further evaluation of surgical results in larger studies is needed.

Creating awareness of this condition and a better diagnostic approach potentially reduces the time between the onset of symptoms until start of treatment, as this was reported to be quite extreme in most cases.^{13 15}

Navicular

Significant differences could not be calculated; however, current data suggest that surgical treatment results in an earlier return to sport (16.4 vs 21.7 weeks). Postoperative complications were rarely reported (table 2). Among conservatively treated patients, the complication rates were high, especially delayed unions and refractures. A NWBC treatment of at least 6 weeks results in less treatment failures than conservative treatment without non-WB immobilisation.³⁸ Therefore, this would be the conservative treatment of choice. The surgical methods were different in reviewed studies, all using screws for internal fixation and in some with additional bone graft. Unfortunately, data are insufficient to depict the best surgical treatment.

Owing to the lack of RCTs and non-randomised trials (comparison studies), we could not perform a statistical comparison between pooled surgery and conservative outcomes. This is in contradiction to the review by Torg *et al*,²⁸ where a comparative meta-analysis was performed. Their review also included case reports, thus limiting the level of evidence provided. This could have introduced a considerable RoB, which was not assessed. Some studies included very few cases, but in the performed meta-analysis, data were not weighted according to study size. In addition, the already low numbers of surgical cases included in their analysis were secondary treatments due to delayed union or non-union after conservative treatment. More importantly, no significant difference between surgical treatment and NWBC was found.

With these limitations in mind, appropriate advice for standard of care cannot be made.

Proximal fifth metatarsal

Patients with this type of fracture must account for time away from sports of approximately 14 weeks. Significant differences could not be calculated; however, surgical treatment resulted in an earlier return to sport (13.8 vs 19.2 weeks). Union problems and refractures seem less prevalent after surgical treatment. Conservative treatment details were limited, consisting of WB and non-WB protocols. Unfortunately, evidence is still lacking to advise on one adequate method. Operative treatment varied, but is mostly based on providing compression by means of an

intramedullary screw fixation or tension band wiring. Even though sclerotic aspects of the fracture are seen on radiographs (eg, Torg 3 fractures), it is not mentioned that surfaces are revitalised prior to compression. This is a known procedure in fracture non-union surgery and might be of additional value.

Furthermore, the distinction and interpretation of stress fractures or Jones' fractures can be difficult; therefore verification by contacting the authors was needed to ensure inclusion of stress fractures only and reduce possible selection bias. Though some claim this differentiation is not necessary⁴⁰ Kerkhoffs *et al*²⁷ showed a difference in outcomes between these fracture types. The same review advised surgical treatment in high-level athletes, but evidence was restrained from RoB assessment, which appears to be considerable. Roche *et al*⁴⁹ reviewed proximal metatarsal fractures as well; however, the outcomes of both stress and acute fractures were interpreted as one group and are therefore different from the current study.

All included studies had a high RoB and the evidence was of very low quality. Future studies should include larger sample sizes and use more valid study designs. Although it might be difficult to perform randomised controlled trials because of the small number of eligible patients and their professional athletic background, at least a prospective study design should be used including all patients and with time to return to activity, work and sport as main outcomes. Complication rates of high-risk stress fractures are high, especially for the anterior tibia. To monitor outcomes and complications, follow-up needs to be long enough to measure these outcomes. At present, it remains unclear whether surgery is more effective than conservative treatment for high-risk stress fractures of the lower leg.

Acknowledgements The authors would like to thank Faridi van Etten—Jamaludin, clinical librarian, their hospital (blinded for peer review), for constructing an adequate and extensive search strategy for all databases.

Contributors WHM wrote protocol, registered protocol, performed search, reviewed eligible articles, extracted data, wrote manuscript and submitted manuscript. HW reviewed eligible articles, extracted data, performed data analysis and wrote manuscript. CNvD supported and corrected manuscript. MWWT performed data analysis, supported and corrected manuscript. GMK was involved in protocol suggestion, supported and corrected protocol and manuscript. C-WCL wrote protocol, performed search strategy, was third reviewer in case of disagreement, supported and corrected manuscript.

What are the new findings?

- ▶ High-risk stress fractures of the lower leg are prone to be a career ending injury in athletes.
- ▶ Conservative therapy in anterior tibial stress fractures reported very low success rates and only a few athletes returned to their previous sports level.
- ▶ Navicular and fifth metatarsal stress fractures seem to have an earlier return to sport after surgical therapy.
- ▶ Prospective research with clear premade definitions on return to sport and time to fracture healing is needed to disclose firm conclusions about treatment of high-risk stress fractures.

Competing interests WHM is funded by a PhD Scholarship provided by the Academic Medical Center of Amsterdam, The Netherlands. HW is sponsored by a Marti Keunig Eckhardt Foundation Grant.

Provenance and peer review Not commissioned; externally peer reviewed.

REFERENCES

- 1 Rome K, Handoll Helen HG, Ashford R, *et al*. Interventions for preventing and treating stress fractures and stress reactions of bone of the lower limbs in young adults. *Cochrane Database Syst Rev* 2005;(2):CD000450. <http://onlinelibrary.wiley.com/doi/10.1002/14651858.CD000450.pub2/abstract>
- 2 Armstrong IDW, Rue JPH, Wilckens JH, *et al*. Stress fracture injury in young military men and women. *Bone* 2004;35:806–16.
- 3 Kelly AKW, Hame SL. Managing stress fractures in athletes. *J Musculoskelet Med* 2005;22:463.
- 4 Shindle MK, Endo Y, Warren RF, *et al*. Stress fractures about the tibia, foot, and ankle. *J Am Acad Orthop Surg* 2012;20:167–76.
- 5 Rolf C, Ekenman I, Tornqvist H, *et al*. The anterior stress fracture of the tibia: an atrophic pseudoarthrosis? *Scand J Med Sci Sports* 1997;7:249–52.
- 6 Torg JS, Pavlov H, Cooley LH, *et al*. Stress fractures of the tarsal navicular. A retrospective review of twenty-one cases. *J Bone Joint Surg Am* 1982;64:700–12.
- 7 Shereff MJ, Yang QM, Kummer FJ, *et al*. Vascular anatomy of the fifth metatarsal. *Foot Ankle* 1991;11:350–3.
- 8 Smith JW, Arnoczky SP, Hersh A. The intraosseous blood supply of the fifth metatarsal: implications for proximal fracture healing. *Foot Ankle* 1992;13:143–52.
- 9 McKeon KE, Johnson JE, McCormick JJ, *et al*. The intraosseous and extraosseous vascular supply of the fifth metatarsal: implications for fifth metatarsal osteotomy. *Foot Ankle Int* 2013;34:117–23.
- 10 Boden BP, Osbahr DC. High-risk stress fractures: evaluation and treatment. *J Am Acad Orthop Surg* 2000;8:344–53.
- 11 Brukner P, Bennell K. Stress fractures in female athletes. *Diagn Manag Rehabil Sports Med* 1997;24:419–29.
- 12 Kaeding CC, Yu JR, Wright R, *et al*. Management and return to play of stress fractures. *Clin J Sport Med* 2005;15:442–7.
- 13 Orava S, Hulkko A. Stress fracture of the mid-tibial shaft. *Acta Orthop Scand* 1984;55:35–7.
- 14 Liimatainen E, Sarimo J, Hulkko A, *et al*. Anterior mid-tibial stress fractures. Results of surgical treatment. *Scand J Surg* 2009;98:244–9.
- 15 Johansson C, Ekenman I, Lewander R. Stress fracture of the tibia in athletes: diagnosis and natural course. *Scand J Med Sci Sports* 1992;2:87–91.
- 16 Plasschaert VF, Johansson CG, Micheli LJ. Anterior tibial stress fracture treated with intramedullary nailing: a case report. *Clin J Sport Med* 1995;5:58–61; discussion-2.
- 17 Mann JA, Pedowitz DI. Evaluation and treatment of navicular stress fractures, including nonunions, revision surgery, and persistent pain after treatment. *Foot Ankle Clin* 2009;14:187–204.
- 18 Snyder RA, Koester MC, Dunn WR. Epidemiology of stress fractures. *Clin Sports Med* 2006;25:37–52.
- 19 Saxena A, Fullem B, Hannaford D. Results of treatment of 22 navicular stress fractures and a new proposed radiographic classification system. *J Foot Ankle Surg* 2000;39:96–103.
- 20 DeLee JC, Evans JP, Julian J. Stress fracture of the fifth metatarsal. *Am J Sports Med* 1983;11:349–53.
- 21 Ekstrand J, van Dijk CN. Fifth metatarsal fractures among male professional footballers: a potential career-ending disease. *Br J Sports Med* 2013;47:754–8.
- 22 Hens J, Martens M. Surgical treatment of Jones fractures. *Arch Orthop Trauma Surg* 1990;109:277–9.
- 23 Lee KT, Kim KC, Park YU, *et al*. Radiographic evaluation of foot structure following fifth metatarsal stress fracture. *Foot Ankle Int* 2011;32:796–801.
- 24 Torg JS, Balduini FC, Zelko RR, *et al*. Fractures of the base of the fifth metatarsal distal to the tuberosity. Classification and guidelines for non-surgical and surgical management. *J Bone Joint Surg Am* 1984;66:209–14.
- 25 Lawrence SJ, Botte MJ. Jones' fractures and related fractures of the proximal fifth metatarsal. *Foot Ankle* 1993;14:358–65.
- 26 Lee KT, Park YU, Young KW, *et al*. The plantar gap: another prognostic factor for fifth metatarsal stress fracture. *Am J Sports Med* 2011;39:2206–11.
- 27 Kerkhoffs GM, Versteegh VE, Siersevelt IN, *et al*. Treatment of proximal metatarsal V fractures in athletes and non-athletes. *Br J Sports Med* 2012;46:644–8.
- 28 Torg JS, Moyer J, Gaughan JP, *et al*. Management of tarsal navicular stress fractures: conservative versus surgical treatment: a meta-analysis. *Am J Sports Med* 2010;38:1048–53.
- 29 Moher D, Liberati A, Tetzlaff J, *et al*. Preferred reporting items for systematic reviews and meta-analyses: the PRISMA statement. *BMJ* 2009;339:b2535.
- 30 Higgins JPT, Altman DG, Sterne JAC. *Chapter 8: assessing risk of bias in included studies*. *Cochrane Handbook for Systematic Reviews of Interventions*. The Cochrane Collaboration, 2011.
- 31 Guyatt GH, Oxman AD, Vist G, *et al*. GRADE guidelines: 4. Rating the quality of evidence—study limitations (risk of bias). *J Clin Epidemiol* 2011;64:407–15.
- 32 Guyatt GH, Oxman AD, Vist GE, *et al*. GRADE: an emerging consensus on rating quality of evidence and strength of recommendations. *BMJ* 2008;336:924–6.
- 33 Benazzo F, Mosconi M, Beccarisi G, *et al*. Use of capacitive coupled electric fields in stress fractures in athletes. *Clin Orthop Relat Res* 1995;310:145–9.
- 34 Bojanic I, Pecina MM. [Conservative treatment of stress fractures of the tarsal navicular in athletes]. *Rev Chir Orthop Reparatrice Appar Mot* 1997;83:133–8.

- 35 McCormick JJ, Bray CC, Davis WH, *et al.* Clinical and computed tomography evaluation of surgical outcomes in tarsal navicular stress fractures. *Am J Sports Med* 2011;39:1741–8.
- 36 Saxena A, Fullem B. Navicular stress fractures: a prospective study on athletes. *Foot Ankle Int* 2006;27:917–21.
- 37 Burne SG, Mahoney CM, Forster BB, *et al.* Tarsal navicular stress injury: long-term outcome and clinoradiological correlation using both computed tomography and magnetic resonance imaging. *Am J Sports Med* 2005;33:1875–81.
- 38 Khan KM, Fuller PJ, Brukner PD, *et al.* Outcome of conservative and surgical management of navicular stress fracture in athletes. Eighty-six cases proven with computerized tomography. *Am J Sports Med* 1992;20:657–66.
- 39 Orava S, Karpakka J, Hulkko A, *et al.* Diagnosis and treatment of stress fractures located at the mid-tibial shaft in athletes. *Int J Sports Med* 1991;12:419–22.
- 40 Chuckpaiwong B, Queen RM, Easley ME, *et al.* Distinguishing Jones and proximal diaphyseal fractures of the fifth metatarsal. *Clin Orthop Relat Res* 2008;466:1966–70.
- 41 Josefsson PO, Karlsson M, Redlund-Johnell I, *et al.* Closed treatment of Jones fracture. Good results in 40 cases after 11–26 years. *Acta Orthop Scand* 1994;65:545–7.
- 42 Nagao M, Saita Y, Kameda S, *et al.* Headless compression screw fixation of Jones fractures: an outcomes study in Japanese athletes. *Am J Sports Med* 2012;40:2578–82.
- 43 Pecina M, Bojanic I, Smoljanovic T, *et al.* Surgical treatment of diaphyseal stress fractures of the fifth metatarsal in competitive athletes: long-term follow-up and computerized pedobarographic analysis. *J Am Podiatr Med Assoc* 2011;101:517–22.
- 44 Popovic N, Jalali A, Georis P, *et al.* Proximal fifth metatarsal diaphyseal stress fracture in football players. *Foot Ankle Surg* 2005;11:135–41.
- 45 Thevendran G, Deol RS, Calder JD. Fifth metatarsal fractures in the athlete: evidence for management. *Foot Ankle Clin* 2013;18:237–54.
- 46 Saxena A, Fullem B. Comment on Torg *et al.*, “management of tarsal navicular stress fractures: conservative versus surgical treatment”. *Am J Sports Med* 2010;38:NP3–5; author reply NP.
- 47 Cruz AS, de Hollanda JP, Junior AD, *et al.* Anterior tibial stress fractures treated with anterior tension band plating in high-performance athletes. *Knee Surg Sports Traumatol Arthrosc* 2013;21:1447–50.
- 48 Borens O, Sen MK, Huang RC, *et al.* Anterior tension band plating for anterior tibial stress fractures in high-performance female athletes: a report of 4 cases. *J Orthop Trauma* 2006;20:425–30.
- 49 Roche AJ, Calder JD. Treatment and return to sport following a Jones fracture of the fifth metatarsal: a systematic review. *Knee Surg Sports Traumatol Arthrosc* 2013;21:1307–15.

Supplementary table 1: Study characteristics

Reference	Study design	Treatment	Treatment details	Sample size	Sex	Age	Level of sport	FU time
Anterior Tibia				n (fractures)	M : F	yr (range)		mnths (range)
Johansson et al.	Retrospective case series	C	Immobilization and trainingrestriction	11 (14)	3 : 8	27.2 (11 - 44)	A	36 (24 - 60)
Orava et al.	Retrospective case series	C	Rest from sports (6 months (3-10))	17	6 : 2	24.6 (18 - 32)	A	xx
Navicular								
Benazzo et al.	Retrospective case series	C	Electrostimulation 24h until healing or improvement	13	4 : 17 *	21.8 (17 - 29) *	A	
Bojanic et al.	Prospective cohort	C	NWBC 6-8wk	17 (18)	8 : 9	20.1 (17 - 34)	A	33.9 (14 - 69)
Burne et al.	Retrospective case series	C	2:NWBC>6wk 1:NWB 6wk 2:NWB>1wk 6:WB	11	3 : 8	24.6 (13 - 49)	A	> 12
Khan et al.	Retrospective case series	C & S		82 (86)	51 : 31	20.2 (14 - 39)	A	33 (6 - 108)
		S	Bone graft / internal fixation / both	6				
			AC = unknown					
	C	5 no limitations, 40 AL, 22 NWBC >6 wk, 13 NWBC 2-5 wk	80					
McCormick et al.	Retrospective case series	S	Vitalization (7xIncl.BG) and 2x 4.0 /1x 2 4.5 cannulated screws, 1x 4.0mm screw	10	7 : 3	28.7 (18 - 54)	A / 3 NA	42.4
			AC = splint 2 wk, NWBC 4 wk, than NWB boot 4 wk					
Saxena et al.2000	Retrospective case series	C & S		19 (22)	9 : 10	27.2 (17 - 48)	xx	36.5 (8 - 62)
		S (2)	Vitalization, BG and when needed 4.0mm cancellous screw	4				
			AC = unknown					
	C	Unknown	18					
Saxena et al.2006	Retrospective case series	C & S		19			xx	> 24 (3: >12)
		S (1)	Open reduction and internal fixation	13	6 : 7	26.2 (16 - 40)		
			AC = 6wk NWBC followed by WB 2-6wk until pain free					
	C	6wk NWBC followed by WB 2-6wk until pain free	6	2 : 4	21.5 (16 - 30)			
Torg et al. 1982	Retrospective case series	C &S		19 (21)	19 : 2	21.8 (15 - 42)	A	20.8 (4 - 42)
		S	1 open reduction and internal fixation, 1 BG	2	2 : 0			
			AC = NWBC 6 wk					
	C	10 NWBC 6-8 wk, 4 WBC (duration not specified), 5 AL	19	17 : 2				

Fifth Metatarsal								
Chuckpaiwong et al.	Retrospective case series	C & S		29	22 : 7	27.6 (12.4)	A / 3 NA	xx
		S (3)	Unknown	21				
		C	4-6 wk NWBC followed by 4-8wk functional splint	8				
DeLee et al.	Retrospective case series	S	7 ASIF screw, 3 Lienbach screw AC = NWBC 2wks, gradual WB progression with foot protection	10	9 : 1	21 (18 - 28)	A	14.5 (10 - 27)
Ekstrand et al.	Prospective cohort	C & S		20	20 : 0	23 (18 - 33) *	A	xx
		S	Unknown	14				
		C	Unknown	6				
Josefsson et al.	Retrospective case series	C	13 WB permitted & optional elastic bandage / 1 plaster cast 3 wk	14	14 : 0	24.7 (16 - 45)	xx	240 (144 - 312)
Lee et al.	Retrospective case series	S	19 T1 & 43 T2: tensionband wire / 13 T3: with BG AC = NWBC 6 wk followed by boot and WB	73 (75)	71 : 2	19.8 (13 - 33)	A	xx
Nagao et al.	Retrospective case series	S	47 Acutrak / 13 Plus headless compression screw fixation AC = WB & shoe insoles during sport	60	59 : 1	19 (15 - 31)	A	44.5 (5 - 110)
Pecina et al.	Retrospective case series	S	4.5mm malleolar screw AC = NWBC 3 wks followed by WB hardsole shoe & AL >6 wk	20	19 : 1	21 (16 - 26)	A	123.6 (42 - 228)
Popovic et al.	Retrospective case series	S		18	xx		A	37.2
		S	17 PC 4.5mm malleolar screw, 1 stainless steel 6.5mm cancellous screw	11		20.5 (18 - 23)		
		S	Open 4.5mm malleolar screw with BG AC = NWBC 3wks than WBC 3wks	7		20.6 (19 - 22)		

* Including other fractures

- 1) Surgery: all T2,3 except 1xT2 and 1xT3
- 2) Surgery: T2 and 5 patients secondary after 6-12wk NWBC
- 3) Surgery if displacement >2-3mm, competitive athletes, without progression >3months, not willing conservative treatment, abnormal sclerosis at fracture site (Torg2/3)

NWBC: non-weightbearing cast
WBC: weightbearing cast
NWB: non-weightbearing
WB: weightbearing
AL: activities limitations
AC: aftercare
BG: bone graft
PC: percutaneous

A: athletes
NA: non-athletes
FU: follow-up