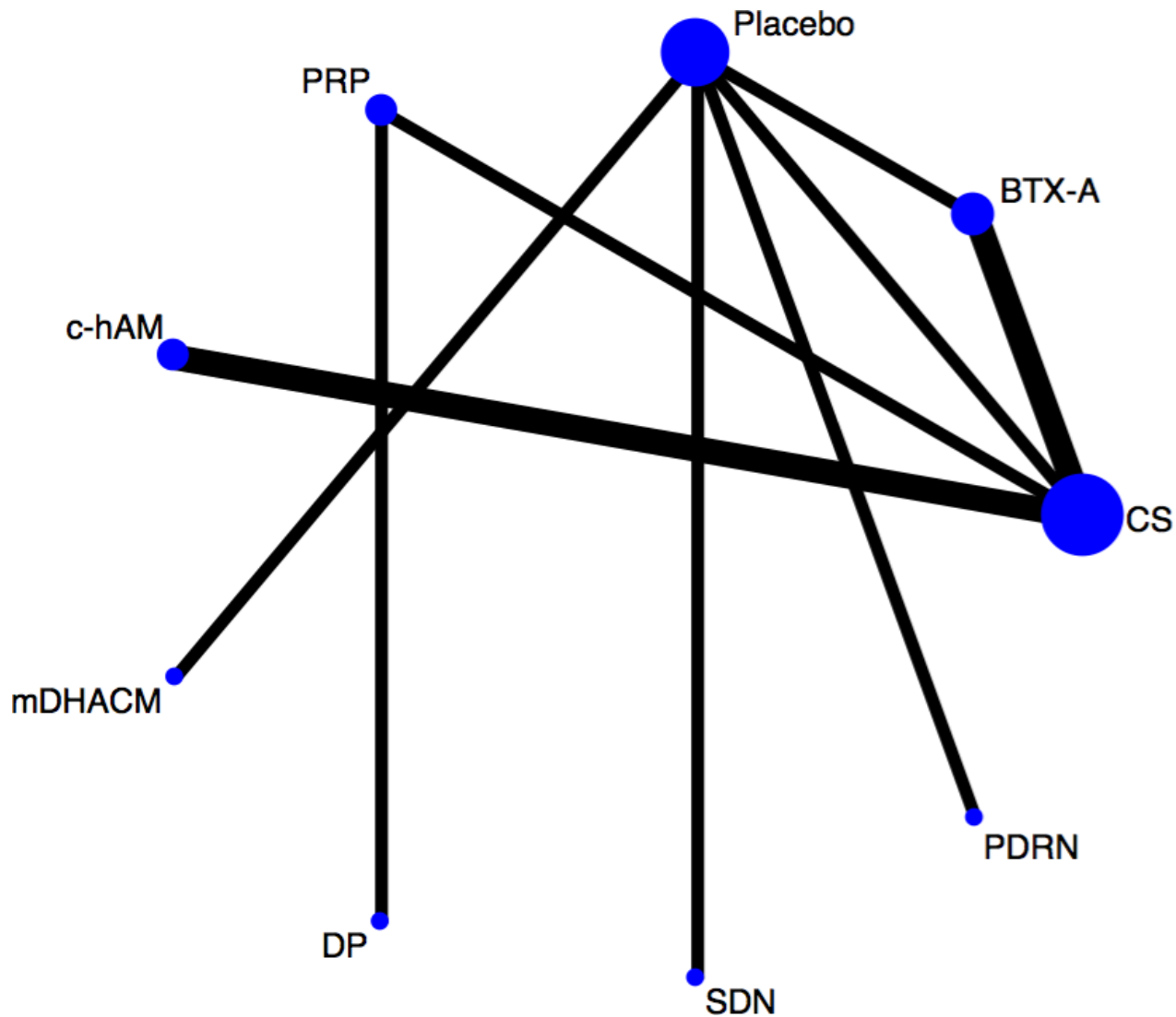
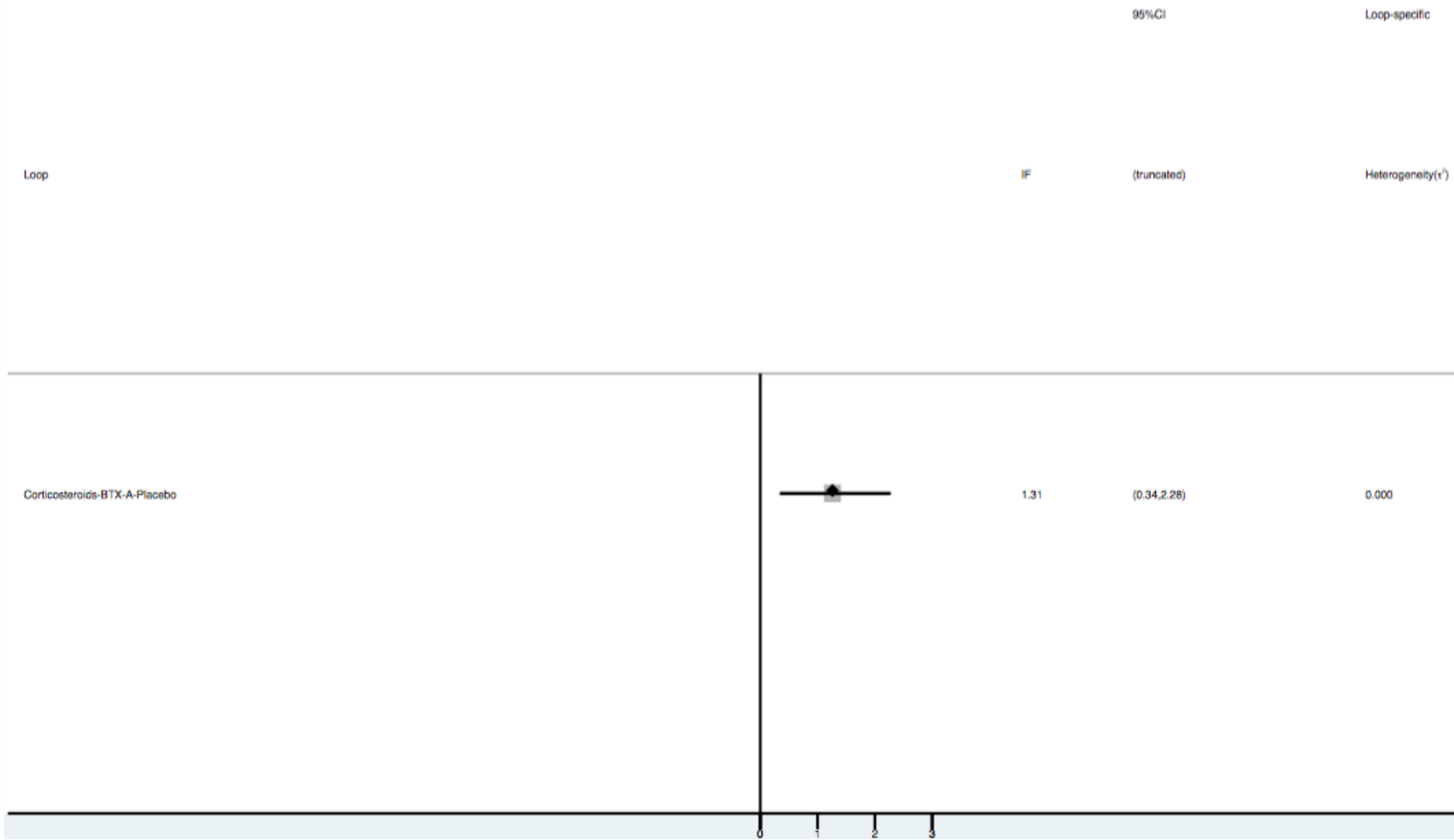


## Composite outcome assessment in the short term (0-2 months)



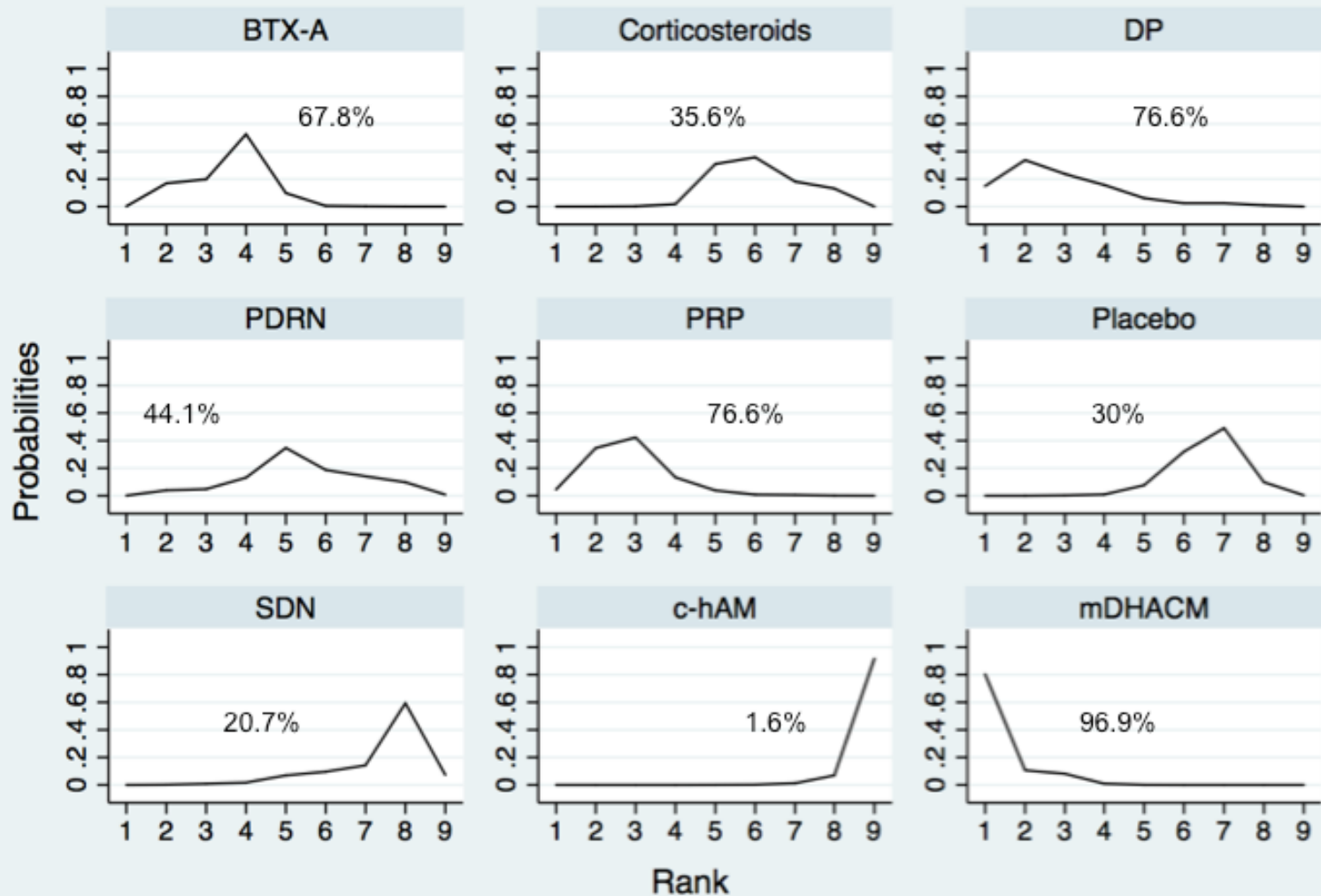
Network meta-analysis plot for composite outcome assessment in the short term. CS= Corticosteroids; PRP= Platelet-Rich Plasma; mDHACM= micronized dehydrated human amniotic/chorionic membrane; DP= Dextrose Prolotherapy; BTX-A= Botulinum Toxin-A; PDRN= Polydeoxyribonucleotide; c-hAM= cryopreserved human Amniotic Membrane; SDN= Sham Dry Needling.



Inconsistency plot for composite outcome assessment in the short term. IF= Inconsistency Factor; CI= Confidence Interval; BTX-A= Botulinum Toxin-A.

		Direct comparisons in the network									
		CS vs BTX-A	CS vs Placebo	CS vs PRP	CS vs c-hAM	BTX-A vs Placebo	Placebo vs mDHACM	Placebo vs SDN	Placebo vs PDRN	PRP vs DP	
Network meta-analysis estimates	<b>Mixed estimates</b>										
	CS vs BTX-A	52.9	23.6	0.0	0.0	23.6	0.0	0.0	0.0	0.0	
	CS vs Placebo	15.0	70.0	0.0	0.0	15.0	0.0	0.0	0.0	0.0	
	CS vs PRP	0.0	0.0	100.0	0.0	0.0	0.0	0.0	0.0	0.0	
	CS vs c-hAM	0.0	0.0	0.0	99.9	0.0	0.0	0.0	0.0	0.0	
	BTX-A vs Placebo	34.0	34.0	0.0	0.0	32.0	0.0	0.0	0.0	0.0	
	Placebo vs mDHACM	0.0	0.0	0.0	0.0	0.0	100.0	0.0	0.0	0.0	
	Placebo vs SDN	0.0	0.0	0.0	0.0	0.0	0.0	100.0	0.0	0.0	
	Placebo vs PDRN	0.0	0.0	0.0	0.0	0.0	0.0	0.0	100.0	0.0	
	PRP vs DP	0.0	0.0	0.0	0.0	0.0	0.0	0.0	0.0	100.0	
	<b>Indirect estimates</b>										
	CS vs SDN	8.1	37.8	0.0	0.0	8.1	0.0	45.9	0.0	0.0	
	CS vs PDRN	8.1	37.8	0.0	0.0	8.1	0.0	0.0	45.9	0.0	
	CS vs mDHACM	8.1	37.8	0.0	0.0	8.1	45.9	0.0	0.0	0.0	
	CS vs DP	0.0	0.0	50.0	0.0	0.0	0.0	0.0	0.0	50.0	
	BTX-A vs PRP	30.0	13.4	43.3	0.0	13.4	0.0	0.0	0.0	0.0	
	BTX-A vs c-hAM	30.0	13.4	0.0	43.3	13.4	0.0	0.0	0.0	0.0	
	BTX-A vs SDN	20.5	20.5	0.0	0.0	19.3	0.0	39.8	0.0	0.0	
	BTX-A vs PDRN	20.5	20.5	0.0	0.0	19.3	0.0	0.0	39.8	0.0	
	BTX-A vs mDHACM	20.5	20.5	0.0	0.0	19.3	39.8	0.0	0.0	0.0	
	BTX-A vs DP	20.9	9.3	30.2	0.0	9.3	0.0	0.0	0.0	30.2	
	Placebo vs PRP	8.1	37.8	45.9	0.0	8.1	0.0	0.0	0.0	0.0	
	Placebo vs c-hAM	8.1	37.8	0.0	45.9	8.1	0.0	0.0	0.0	0.0	
	Placebo vs DP	5.5	25.9	31.5	0.0	5.6	0.0	0.0	0.0	31.5	
	PRP vs c-hAM	0.0	0.0	50.0	50.0	0.0	0.0	0.0	0.0	0.0	
	PRP vs SDN	5.5	25.9	31.5	0.0	5.6	0.0	31.5	0.0	0.0	
	PRP vs PDRN	5.5	25.9	31.5	0.0	5.5	0.0	0.0	31.5	0.0	
	PRP vs mDHACM	5.5	25.9	31.5	0.0	5.6	31.5	0.0	0.0	0.0	
	c-hAM vs SDN	5.5	25.9	0.0	31.5	5.6	0.0	31.5	0.0	0.0	
	c-hAM vs PDRN	5.5	25.9	0.0	31.5	5.6	0.0	0.0	31.5	0.0	
	c-hAM vs mDHACM	5.5	25.9	0.0	31.5	5.6	31.5	0.0	0.0	0.0	
	c-hAM vs DP	0.0	0.0	33.3	33.3	0.0	0.0	0.0	0.0	33.3	
SDN vs PDRN	0.0	0.0	0.0	0.0	0.0	0.0	50.0	50.0	0.0		
SDN vs mDHACM	0.0	0.0	0.0	0.0	0.0	50.0	50.0	0.0	0.0		
SDN vs DP	4.2	19.7	23.9	0.0	4.2	0.0	23.9	0.0	23.9		
PDRN vs mDHACM	0.0	0.0	0.0	0.0	0.0	50.0	0.0	50.0	0.0		
PDRN vs DP	4.2	19.7	23.9	0.0	4.2	0.0	0.0	23.9	23.9		
mDHACM vs DP	4.2	19.7	23.9	0.0	4.2	23.9	0.0	0.0	23.9		
<b>Entire network</b>	<b>9.1</b>	<b>19.6</b>	<b>16.6</b>	<b>9.5</b>	<b>7.1</b>	<b>9.5</b>	<b>9.5</b>	<b>9.5</b>	<b>9.5</b>		
<b>Included studies</b>	<b>2</b>	<b>1</b>	<b>1</b>	<b>2</b>	<b>1</b>	<b>1</b>	<b>1</b>	<b>1</b>	<b>1</b>		

Contribution plot for composite outcome assessment in the short term. CS= Corticosteroids; BTX-A= Botulinum Toxin-A; PRP= Platelet-Rich Plasma; mDHACM= micronized Dehydrated Human Amniotic/Chorionic Membrane; DP= Dextrose Prolotherapy; PDRN= Polydeoxyribonucleotide; c-hAM= cryopreserved human Amniotic Membrane; SDN= Sham Dry Needling.

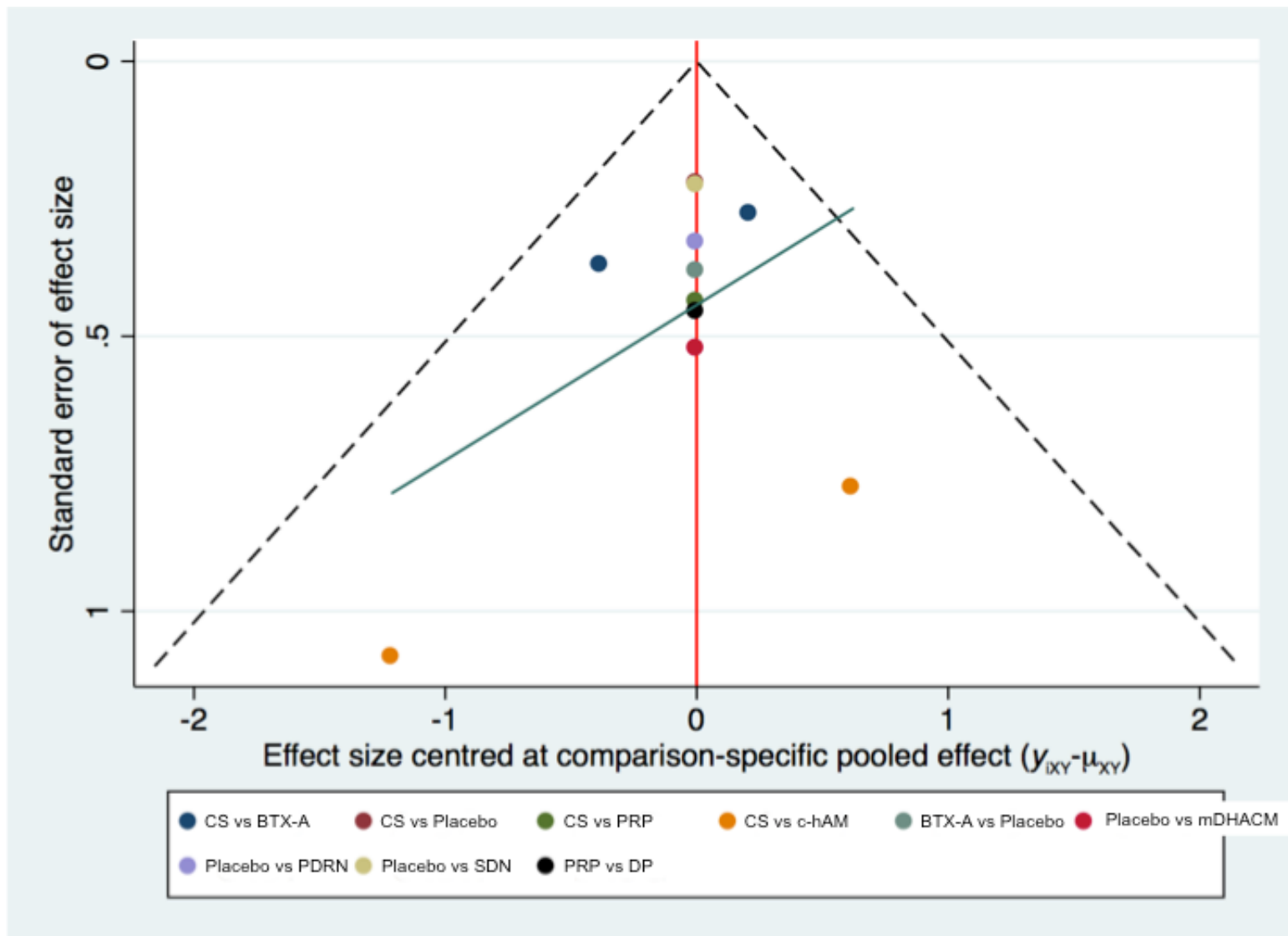


Graphs by Treatment

Ranking probability plot for the assessment of composite outcomes in the short term. BTX-A= Botulinum Toxin-A; PRP= Platelet-Rich Plasma; mDHACM= micronized Dehydrated Human Amniotic/Chorionic Membrane; DP= Dextrose Prolotherapy; PDRN= Polydeoxyribonucleotide; c-hAM= cryopreserved human Amniotic Membrane; SDN= Sham Dry Needling.

<b>Corticosteroids</b>									
0.22 (-1.42,1.86)	<b>PDRN</b>								
-0.63 (-2.20,0.94)	-0.86 (-2.65,0.94)	<b>SDN</b>							
1.79 (-0.24,3.83)	1.57 (-1.05,4.18)	2.42 (-0.15,4.99)	<b>DP</b>						
<b>3.28 (1.46,5.11)</b>	<b>3.06 (1.04,5.08)</b>	<b>3.92 (1.96,5.88)</b>	1.49 (-1.24,4.23)	<b>mDHACM</b>					
<b>-2.22 (-3.72,-0.72)</b>	<b>-2.45 (-4.68,-0.22)</b>	-1.59 (-3.77,0.59)	<b>-4.01 (-6.54,-1.49)</b>	<b>-5.51 (-7.87,-3.14)</b>	<b>c-hAM</b>				
<b>1.71 (0.28,3.14)</b>	1.49 (-0.69,3.66)	<b>2.34 (0.22,4.47)</b>	-0.08 (-1.53,1.37)	-1.57 (-3.89,0.74)	<b>3.93 (1.86,6.01)</b>	<b>PRP</b>			
-0.21 (-1.20,0.77)	-0.44 (-1.75,0.88)	0.42 (-0.80,1.64)	-2.00 (-4.26,0.26)	<b>-3.50 (-5.03,-1.96)</b>	<b>2.01 (0.21,3.81)</b>	<b>-1.92 (-3.66,-0.19)</b>	<b>Placebo</b>		
<b>1.20 (0.38,2.02)</b>	0.98 (-0.69,2.64)	<b>1.83 (0.24,3.43)</b>	-0.59 (-2.79,1.61)	<b>-2.08 (-3.93,-0.24)</b>	<b>3.42 (1.71,5.13)</b>	-0.51 (-2.16,1.14)	<b>1.41 (0.39,2.44)</b>	<b>BTX-A</b>	

League table showing network meta-analysis estimates of composite outcome assessment in the short term. PRP= Platelet-Rich Plasma; DP= Dextrose Prolotherapy; BTX-A= Botulinum Toxin-A; PDRN= Polydeoxyribonucleotide; c-hAM= cryopreserved human Amniotic Membrane; SDN= Sham Dry Needling; mDHACM=micronized dehydrated human amniotic/chorionic membrane.



Comparison adjusted funnel plot for composite outcome assessment in the short term. CS= Corticosteroids; PRP= Platelet-Rich Plasma; mDHACM= micronized Dehydrated Human Amniotic/Chorionic Membrane; DP= Dextrose Prolotherapy; BTX-A= Botulinum Toxin-A; PDRN= Polydeoxyribonucleotide; c-hAM= cryopreserved human Amniotic Membrane; SDN= Sham Dry Needling.